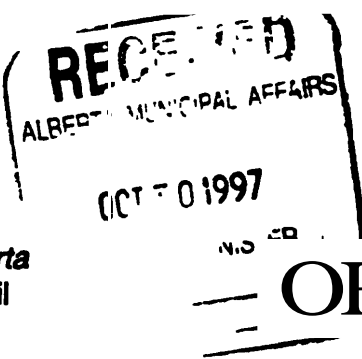




Province of Alberta
Order in Council



O.C. 482 /97

OCT 28 1997

ORDER IN COUNCIL

Approved and ordered:

Administrator

The Lieutenant Governor in council orders that

1 effective December 31, 1997, the land described in Appendix A and shown on the sketch in Appendix B is separated from Parkland County and annexed to The Summer Village of Edmonton Beach,

2 effective December 31, 1997, the land described in Appendix C and shown on the sketch in Appendix D is separated from The Summer Village of Edmonton Beach and annexed to Parkland County,

3 any taxes owing to Parkland County on December 31, 1997 in respect of the annexed land described in Appendix A are transferred to and become payable to The Summer Village of Edmonton Beach together with any lawful penalties and costs levied in respect of those taxes, and The Summer Village of Edmonton Beach upon collecting those taxes, penalties or costs must pay them to Parkland County,

4 any taxes owing to The Summer Village of Edmonton Beach on December 31, 1997 in respect of the annexed land described in Appendix C are transferred to and become payable to Parkland County together with any lawful penalties and costs levied in respect of those taxes, and Parkland County upon collecting those taxes, penalties or costs must pay them to The Summer Village of Edmonton Beach,

5 the assessor for The Summer Village of Edmonton Beach must assess, for the purpose of taxation in 1998, the annexed land described in Appendix A and the assessable improvements to it and the assessment must be made on the same basis as the assessment of other property in The Summer Village of Edmonton Beach, and

6 the assessor for Parkland County must assess, for the purpose of taxation in 1998, the annexed land described in Appendix C and the assessable improvements to it and the assessment must be made on the same basis as the assessment of other property in Parkland County.

CHAIR

bcc: G. Thomas Alberta

For Information only

Recommended by: Minister of Municipal Affairs

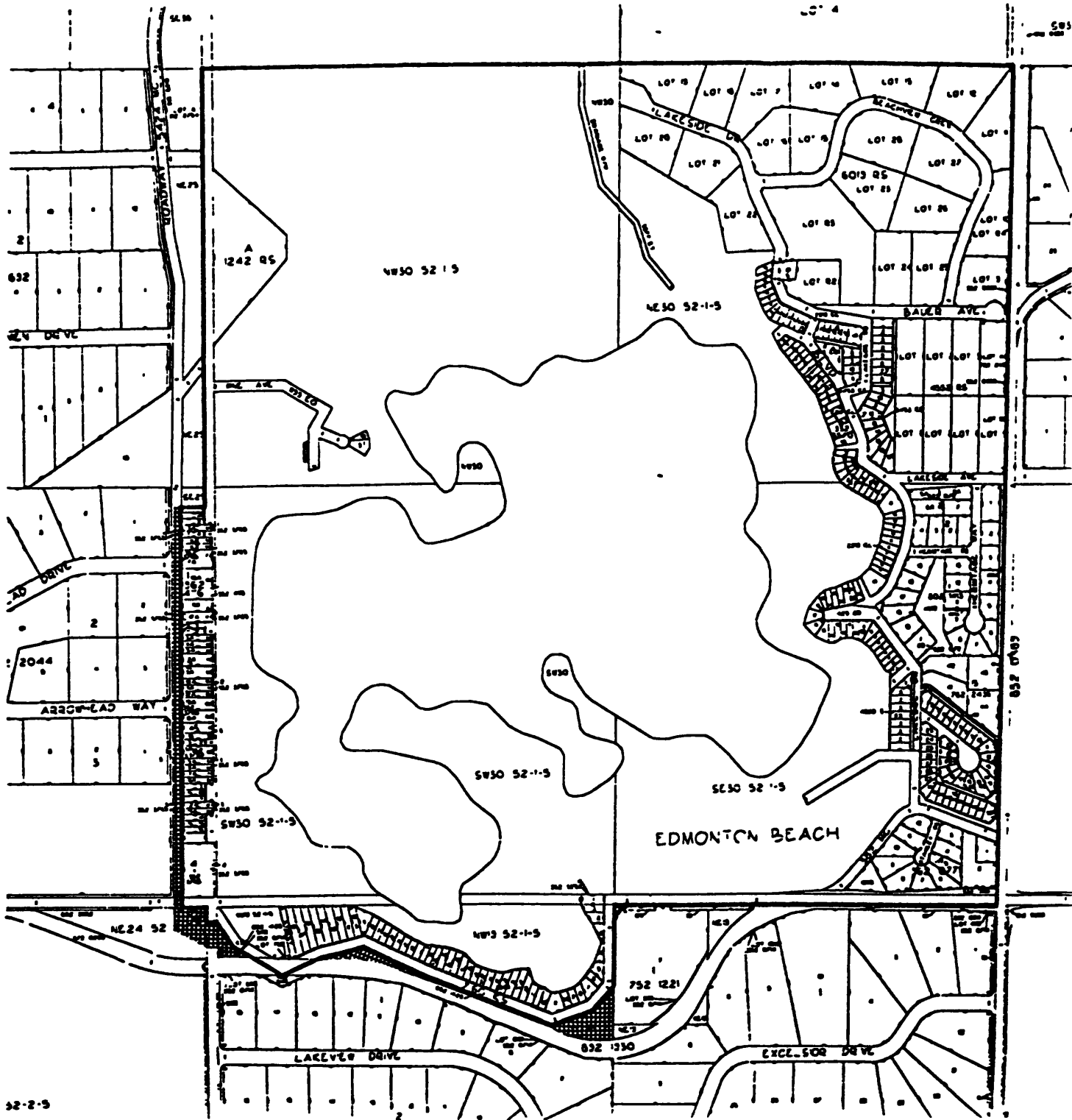
Authority: Municipal Government Act
(section 125)

APPENDIX B

A SKETCH SHOWING THE GENERAL LOCATION OF THE AREAS ANNEXED TO THE SUMMER VILLAGE OF EDMONTON BEACH

EFFECTIVE DATE: DECEMBER 31, 1997

AFFECTED AREA(S)



APPENDIX D

A SKETCH SHOWING THE LOCATION OF THE
AREAS ANNEXED TO PARKLAND COUNTY

EFFECTIVE DATE: DECEMBER 31, 1997

AFFECTED AREA(S)

